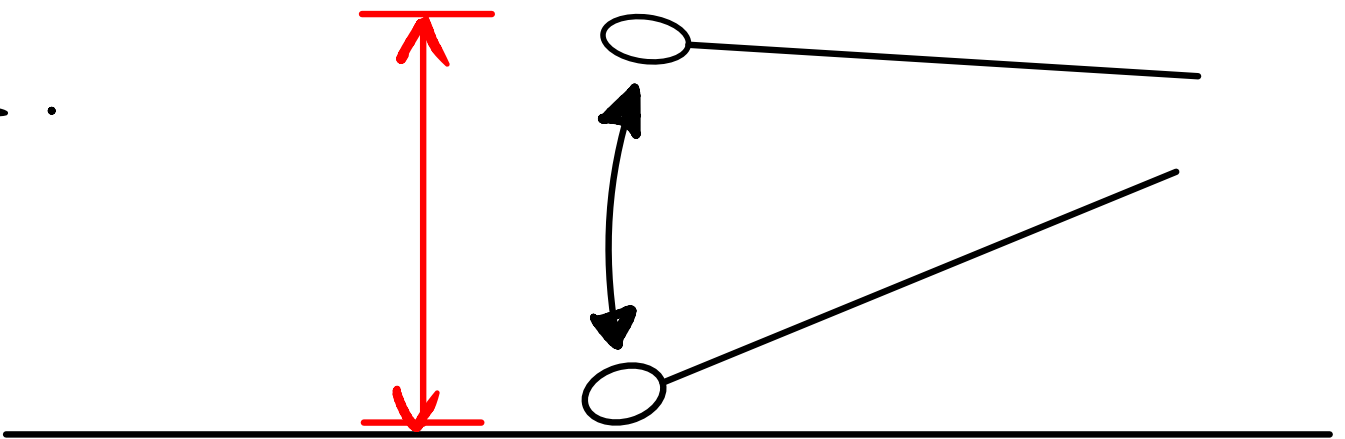
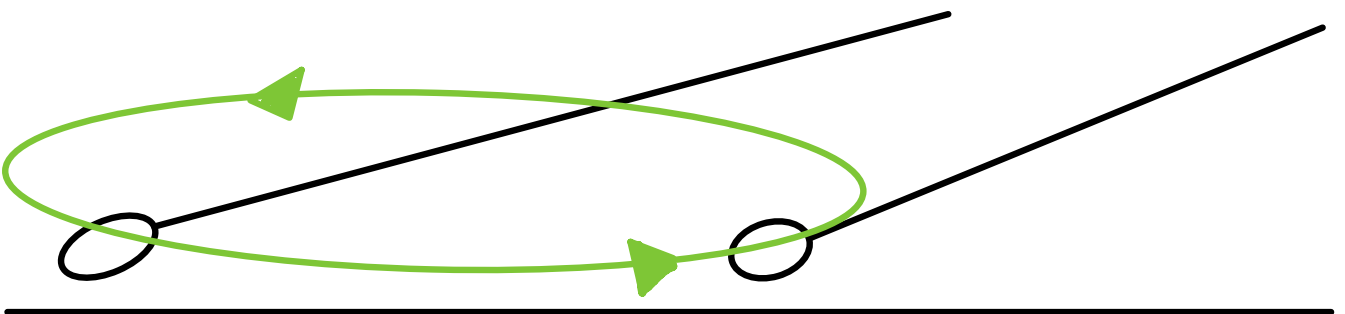
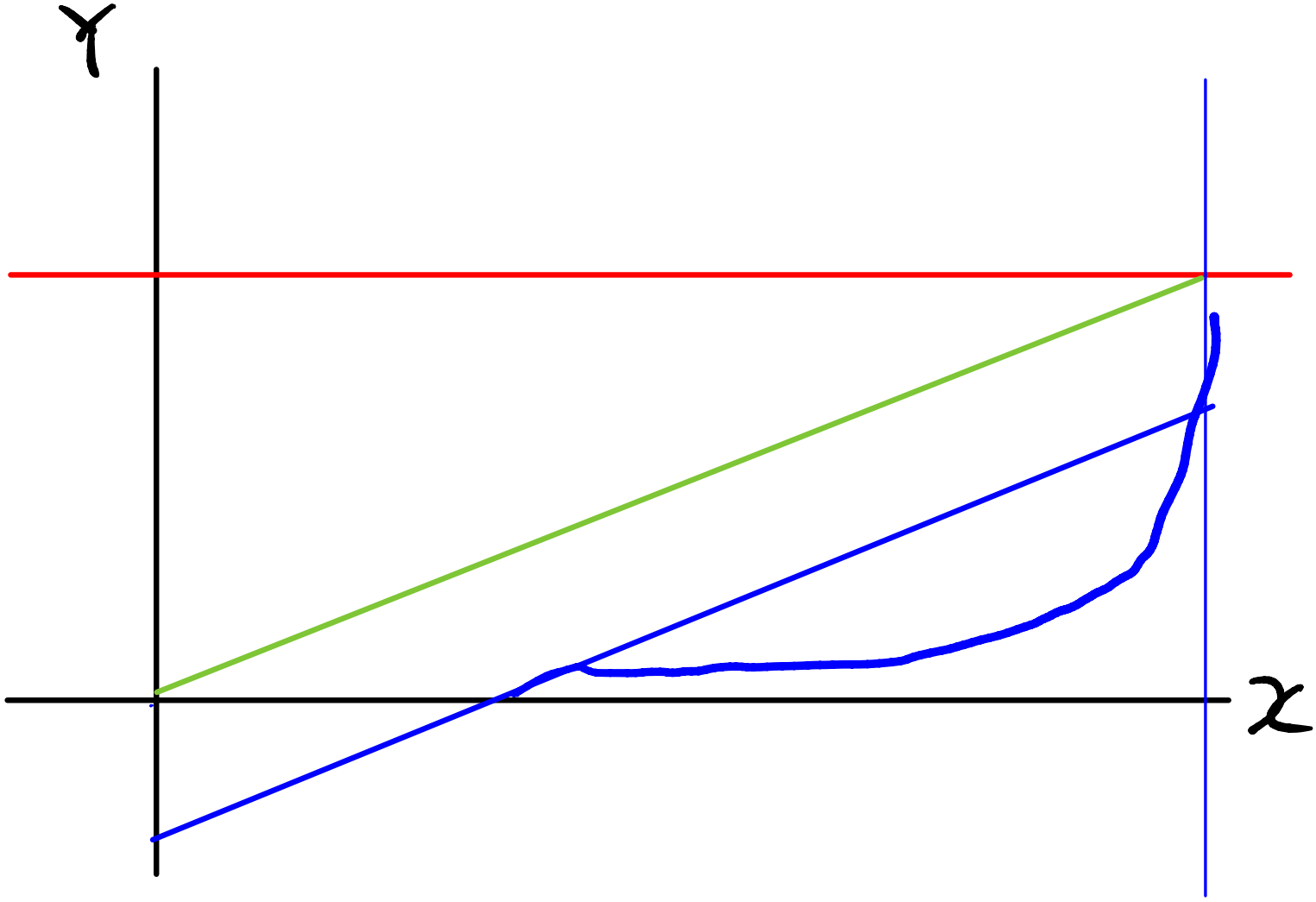


1.



2.





System 1: A three-staff musical system. The top staff contains a sequence of notes with 'x' marks above them, grouped by beams. The middle staff contains a sequence of notes with stems. The bottom staff contains a sequence of notes with stems. The system is divided into two measures.

System 2: A three-staff musical system. The top staff contains a sequence of notes with 'x' marks above them, grouped by beams. A red sharp symbol is placed above the second note. The middle staff contains a sequence of notes with stems. The bottom staff contains a sequence of notes with stems. The system is divided into two measures.

System 3: A three-staff musical system. The top staff contains a sequence of notes with 'x' marks above them, grouped by beams. A red sharp symbol is placed above the fourth note. The middle staff contains a sequence of notes with stems. The bottom staff contains a sequence of notes with stems. The system is divided into two measures.

System 4: A three-staff musical system. The top staff contains a sequence of notes with 'x' marks above them, grouped by beams. A red sharp symbol is placed above the fifth note. The middle staff contains a sequence of notes with stems. The bottom staff contains a sequence of notes with stems. The system is divided into two measures.

System 5: A three-staff musical system. The top staff contains a sequence of notes with 'x' marks above them, grouped by beams. Red sharp symbols are placed above the fourth and fifth notes. The middle staff contains a sequence of notes with stems. The bottom staff contains a sequence of notes with stems. The system is divided into two measures.

System 6: A three-staff musical system. The top staff contains a sequence of notes with 'x' marks above them, grouped by beams. A red sharp symbol is placed above the sixth note. The middle staff contains a sequence of notes with stems. The bottom staff contains a sequence of notes with stems. The system is divided into two measures.